

Operating Instructions & Safety Manual



Manhole Lifting Pin

**Rated Capacities
0.75 through to 2 tonne**

Note: Operator must read and fully understand the operating instructions before using this product.

www.gtlifting.co.uk

George Taylor & Company Lifting Gear (Midlands) Ltd.
Unit 4, Fryers Road, Walsall WS2 7LZ UK

T +44 (0)1922 490220 **F** +44 (0)1922 490229 **E** office@gtlifting.co.uk

Safety Information



DESCRIPTION

GT Manhole Lifting Pins have been designed and made specifically to lift and safely position concrete well rings (manhole chambers).

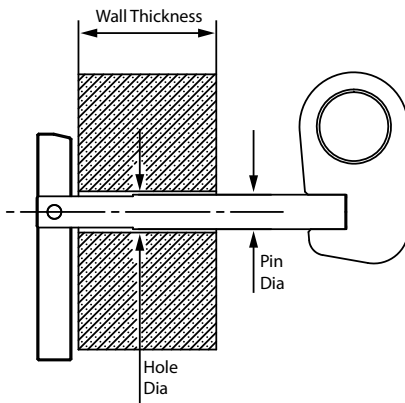
The unique quick-release feature, enables ground workers to complete the installation without the use of additional tools.

ADVANTAGES

- Speeds lifting operations.
- Safe and simple.
- No threads to protect, or nuts to safeguard.
- 4 standard sizes to suit most manhole pipes.

Capacity Per Pin kgs	Pin dia mm	Max. Wall Thickness mm
750	25	120
1,000	32	150
1,500	35	175
2,000	38	215

Fig.1



SAFETY STANDARD

! WARNING

These warnings indicate a potential hazardous situation, that if not avoided could result in death or serious injury. It may also be used to alert against unsafe practices.

- Do not use a single lifting pin.
- This device shall not be used to lift or lower personnel.
- Do not use this device contrary to it's intended use.
- Do not lift or lower loads over an area occupied by people.
- Check the stability of the load attached, on which it is hoisted to prevent accidental detachment of any element.

Operator should be a competent person.

DO NOT ALLOW PERSONS TO OPERATE OR ASSEMBLE THIS UNIT UNTIL THEY HAVE DEVELOPED A THOROUGH UNDERSTANDING OF SAFETY PRECAUTIONS AND HOW IT WORKS.

Before each use of the device, the operator shall carry out a thorough inspection to check the pins condition and proper operation. Carefully check all elements, paying particular attention to any damage, excessive wear, corrosion, abrasion, cuts and malfunction.

In case of any doubts as to the condition and usage of this device. Do not put into service and consult GT.

DO NOT CHANGE, REPAIR OR REPLACE ANY ELEMENTS OF THIS DEVICE.

GT holds no responsibility for the change of mechanical properties which are caused directly or indirectly from maintenance by a third party, without written permission from GT.

Safety Information



GENERAL PRECAUTIONS

CAUTION

- Do not use a single lifting pin.
- Avoid dynamic load - W.L.L. can be greatly exceed.
- Lifting pins can be used in sets of three or four for any manhole chamber.

TRANSPORT

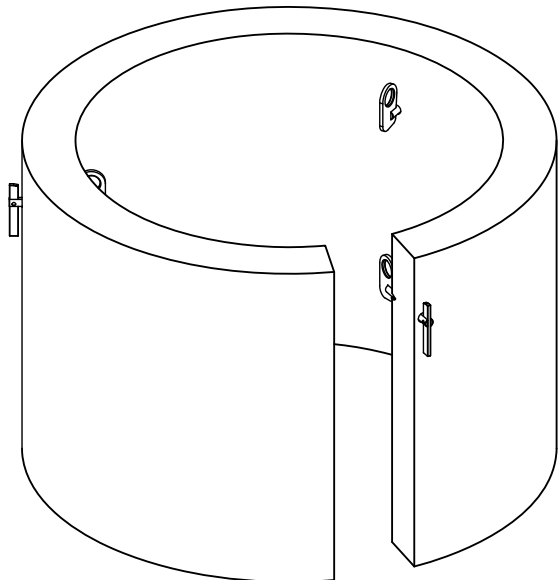
Device(s) shall be transported in suitable packaging protecting it from damage and getting wet.

MAINTENANCE AND STORAGE

Ensure care is taken when using this device. During operation steps shall be taken to avoid mechanical, chemical and thermal damage.

Do not use a damaged or malfunctioning device. Clean a dirty device with a damp cloth. Avoid using chemical agents to clean the device due to mechanical and material damage.

Store the device suitably indoors, packaged. Ensure device is kept away from moisture and sources of heat.

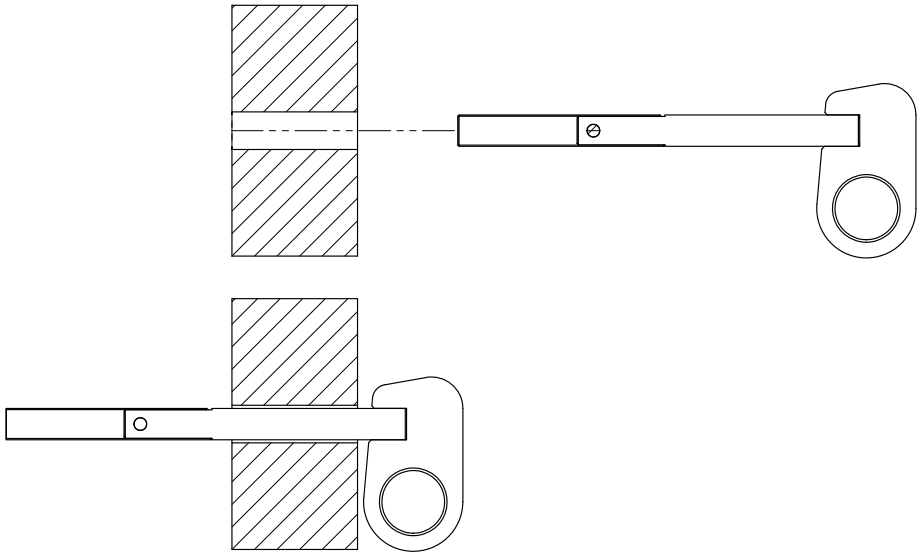


WARNING!
DO NOT USE SINGLE PIN
USE MINIMUM THREE PINS

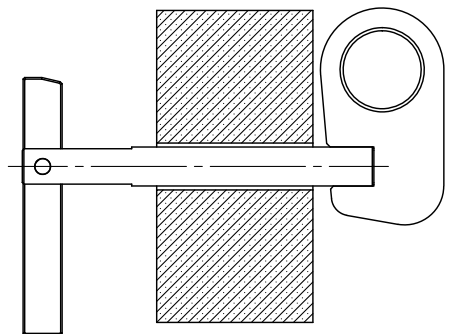
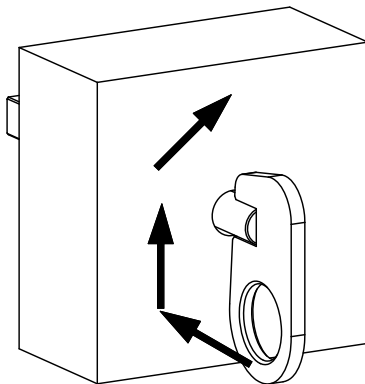
Installation



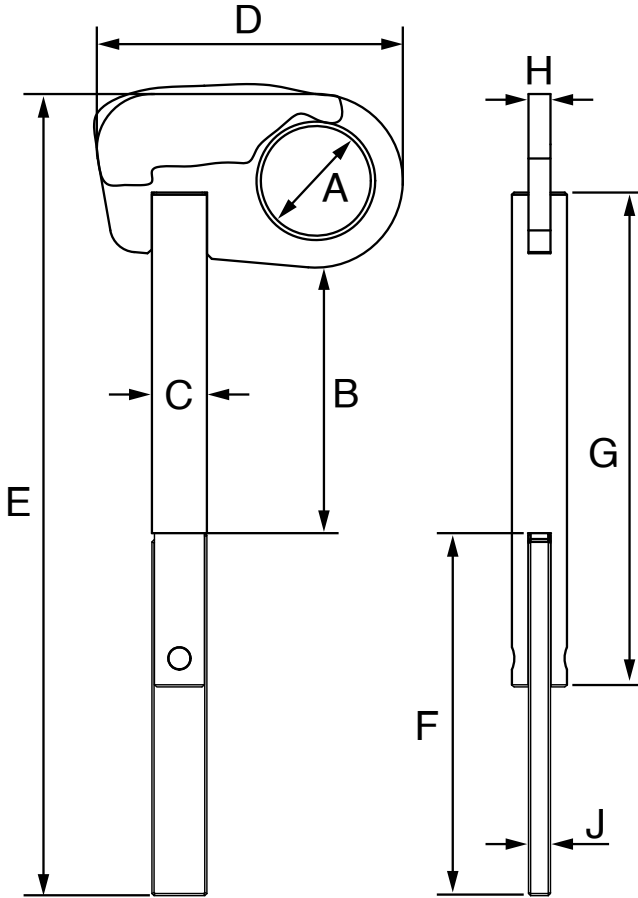
1. Drill a hole into concrete well. According to the lifting pin dia "C", drill slightly larger. (see Specification)
2. Insert pin into the hole.



3. Rotate lifting pin 180°. Pawl should be locked



Specification



Product Code	W.L.L. t	A mm	B mm	C mm	D mm	E mm	F mm	G mm	H mm	J mm	Weight kgs
MHLP.75	0.75	50	120	25	139	365	165	225	10	10	2.5
MHLP1	1	50	150	32	139	400	165	260	10	10	2.8
MHLP1.5	1.5	50	175	35	155	425	165	285	12	10	3
MHLP2	2	50	215	38	155	465	165	325	15	10	3.25

www.gtlifting.co.uk

George Taylor & Company Lifting Gear (Midlands) Ltd.
Unit 4, Fryers Road, Walsall WS2 7LZ UK

T +44 (0)1922 490220 **F** +44 (0)1922 490229 **E** office@gtlifting.co.uk